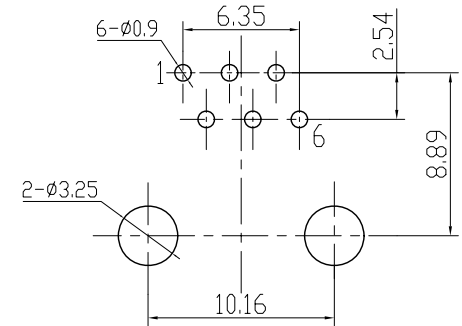
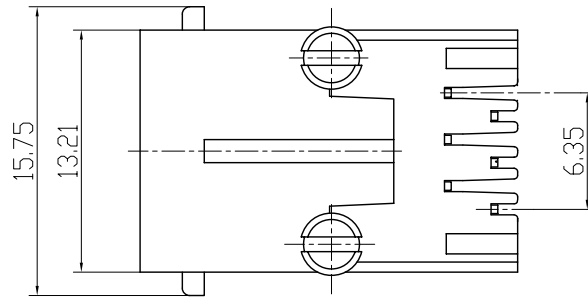
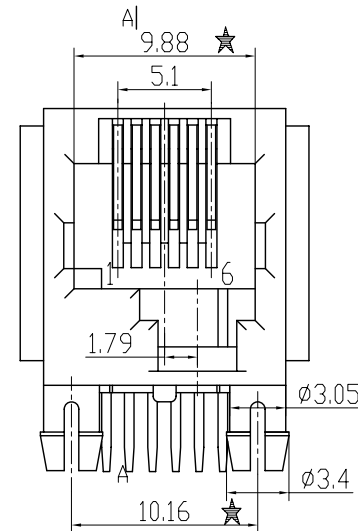
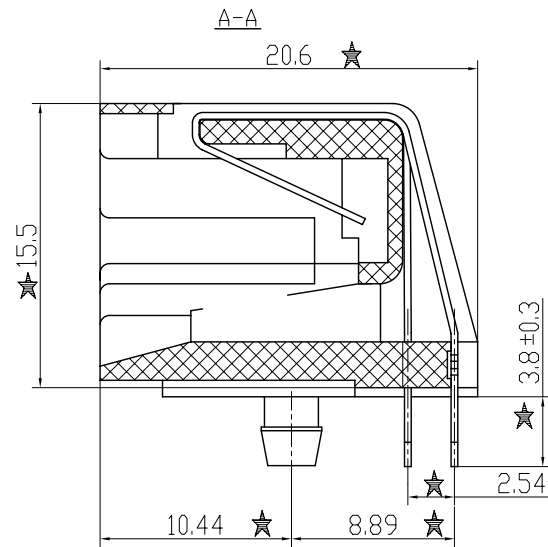
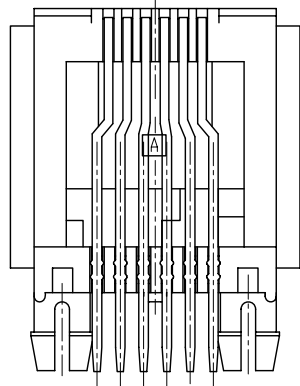


REV.	ECN NO.	DATE



PCB LAYOUT



- NOTE:
- ELECTRICAL:
 - VOLTAGE RATING: 125 VAC RMS;
 - CURRENT RATING: 1.5 AMP;
 - CONTACT RESISTANCE: 20 MILLIOHMS Max;
 - INSULATION RESISTANCE: 1000 MEGOHMS Min @500 VDC;
 - DIELECTRIC STRENGTH: 1000 VAC RMS 50 or 60Hz 1 Minute;
 - MECHANICAL:
 - HOUSING: PBT, UL94V-0, WHITE;
 - TERMINALS: W0.46xT0.36 PHOSPHOR BRONZE PLATED 3u" Au;
 - DURABILITY: 750 CYCLES Min.
- 3.★Critical dimension.

RoHS Compliant

Coor Ie Technology

TOLERANCES

0~15±0.15,
15~30±0.2,
30~±0.25
ANGLE±1°.

MATERIAL: SEE NOTE

Designed:

NAME: 5721 6P6C (left position)

FINISH: SEE NOTE

Checked:

DWG NO.: C07082402

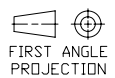
REV

SHEET 1 OF 1

Approved:

PART NO.:

00



A 4
SIZE

SCALE
2.5:1

UNIT
mm

CUSTOMER:

MODEL NO.: